



INDOFINE Chemical Company, Inc.

121 Stryker Lane, Bldg. 30, Suite 1 • Hillsborough, NJ 08844 • U.S.A.

Phone: (908) 359-6778 • FAX: (908) 359-1179

website: www.indofinechemical.com

e-mail: chemical@indofinechemical.com

CERTIFICATE OF ANALYSIS

Catalog Number: 06-662

Product Name: GYPENOSIDE XVII

CAS Number: [80321-69-3]

Lot Number: 2009465

Chemical Formula: C₄₈H₈₂O₁₈

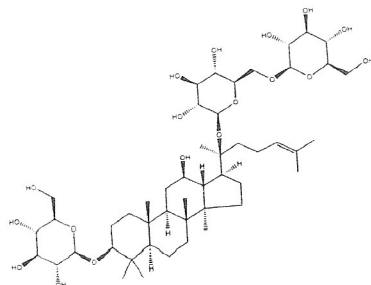
Molecular Weight: 947.16

Appearance: Off-white powder

Loss on Drying: 1.5%

Storage: Store in a cool, dry place

Purity(HPLC): 99.94%



Prepared by:
Ramesh Mandadi
Ramesh Mandadi
Director of Operations

Reviewed and approved by:
Sujata Moton
S. Moton
VP

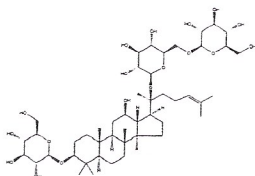
ICG **INDOFINE Chemical Company, Inc.**

121 Stryker Lane, Bldg. 30, Suite 1 • Hillsborough, NJ 08844 • U.S.A.

Phone: (908) 359-6778 • FAX: (908) 359-1179

website: www.indofinechemical.com

e-mail: chemical@indofinechemical.com



HPLC ANALYSIS

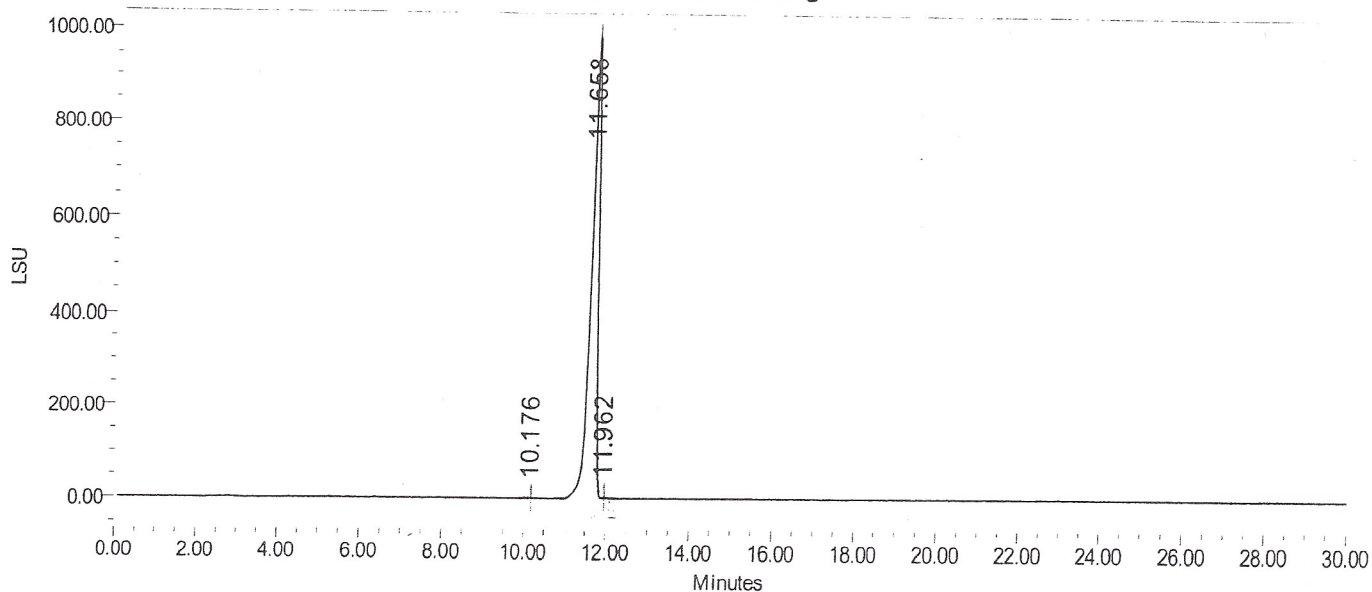
Catalog No.: 06-662
Product Name: Gypenoside XVII
Lot No.: 2009465

SAMPLE INFORMATION

Sample Name: Gypenoside
Sample Type: Unknown
Vial: 1
Injection #: 1
Injection Volume: 10.00 ul
Run Time: 30.0 Minutes

Acquired By: prf01
Sample Set Name
Acq. Method Set: Gypenoside XVII
Processing Method: sample
Channel Name: ELSD Signal
Proc. Chnl. Descr.: ELSD Signal

Auto-Scaled Chromatogram



Peak Results

Name	RT	Area	% Area	Height (µV)	USP Plate Count	USP Resolution
1	10.176	2941	0.03	1168		
2	11.658	11638309	99.94	984914		
3	11.962	4181	0.04	3165		